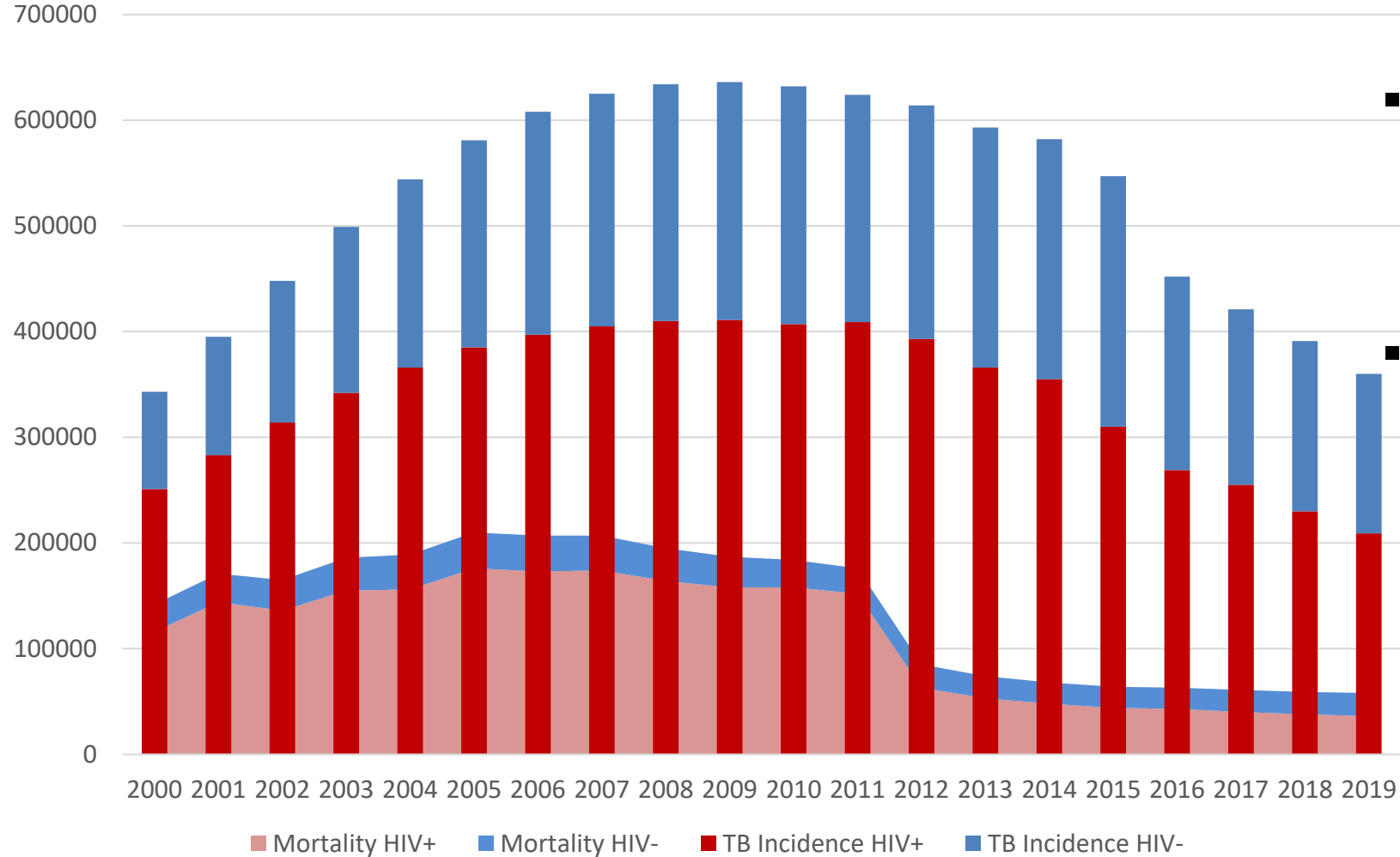


TB Screening guidelines

South Africa Perspective

Salome Charalambous

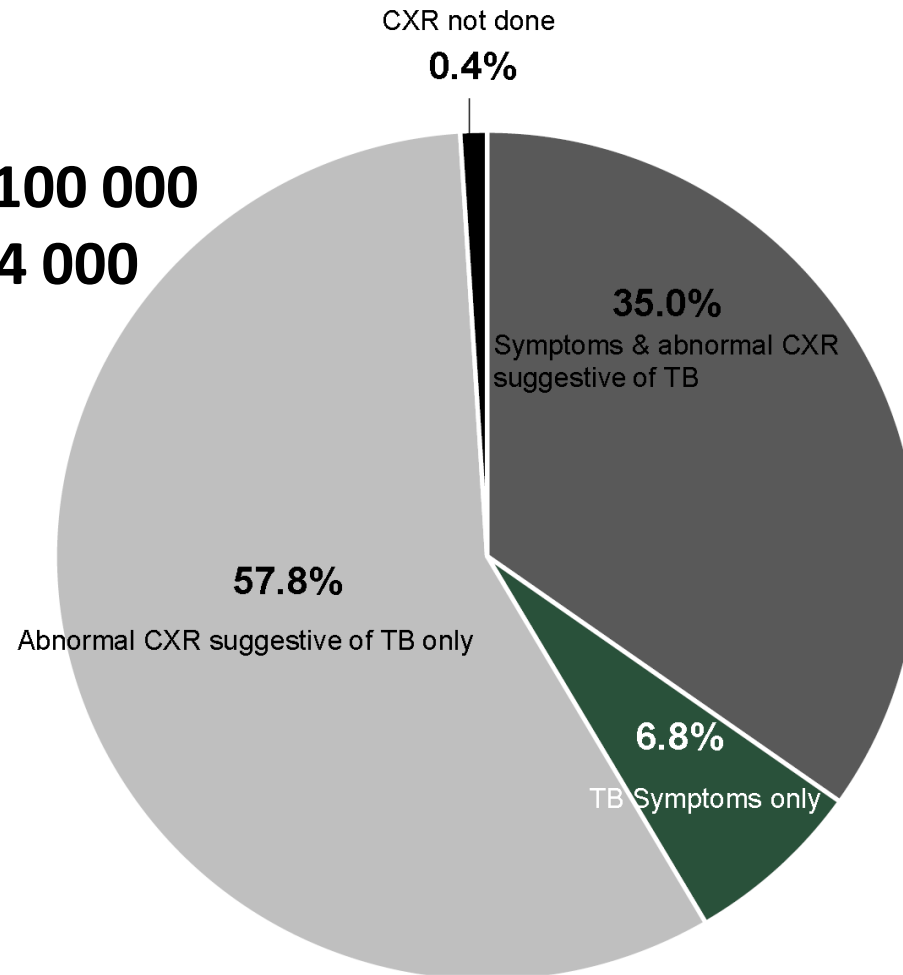
SA TB incidence & mortality



- 43% decline in estimated TB incidence since 2009
 - 49% in HIV+
 - 33% in HIV-
- Sharp decline in mortality since 2011 (176,000 to 58,000)
 - 76% in HIV+
 - 8% in HIV-
 - Stable over last few years

TB Prevalence survey - 2018

234 cases identified:
Estimated Prevalence: 852/100 000
Estimated missing cases: 154 000

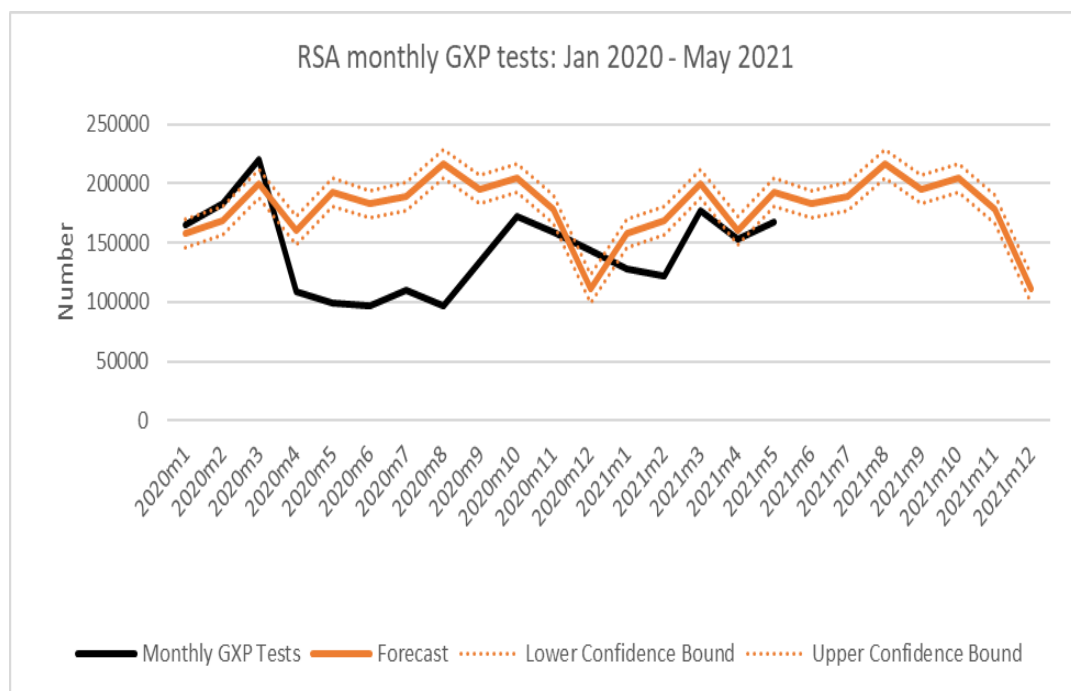


More half of the cases had an abnormal CXR only

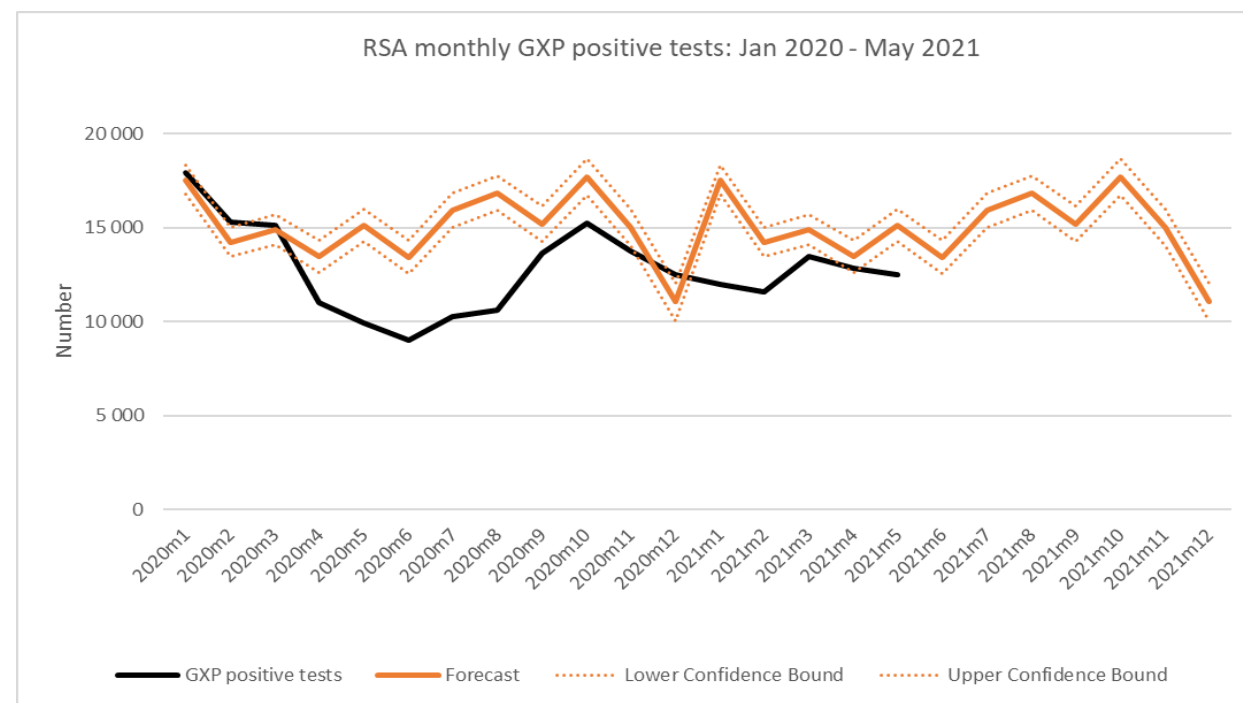
6.8% had TB symptoms only

GXP testing volumes and Positive tests

Monthly GXP tests



Monthly GXP positive tests



Targeted Universal Testing

- Cluster randomized trial: routine testing of all high TB-risk individuals: HIV positive, Previous TB, TB contacts

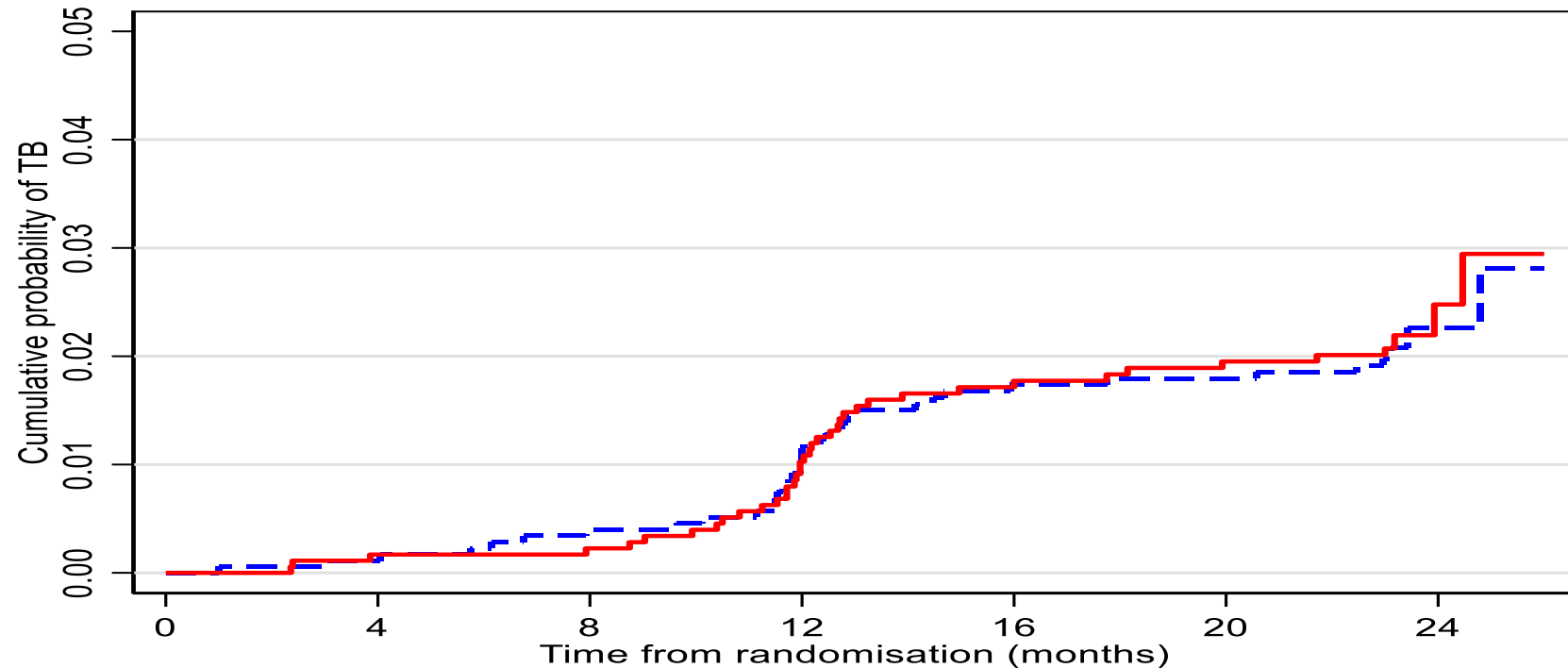
Yield by risk factor	HIV+ n=21734	TB Contact n= 12492	Prior TB n=1573	Overall Yield n=30513	Overall Yield Excluding Prior TB N=28402	Overall yield in patients without symptoms N=21829
Positive Xpert Ultra (including trace)	6.9%	9.3%	15.7%	7.8%	7.3%	6.2%
Positive Xpert Ultra (excluding trace)	4.2%	6.7%	11.1%	5.2%	4.9%	3.7%

- TUTT demonstrated **17% increase in yield in TUTT** compared to SOC clinic

Lebina, CROI 2021

WHIP₃TB Trial:

Evaluating the effectiveness of weekly rifapentine plus isoniazid for 3 months compared with periodic rifapentine plus isoniazid for 3 months and 6 months of daily isoniazid in HIV-positive individuals



No. at risk (TB events):													
Annual rifapentine-isoniazid:	1808	(2)	1742	(5)	1725	(10)	1708	(13)	1659	(1)	1642	(5)	292
Single-round rifapentine-isoniazid:	1802	(3)	1755	(1)	1748	(14)	1731	(12)	1662	(4)	1648	(4)	326



Churchyard, CROI 2020



TB detected at the month 12 and 24 screen

	Month 12	Month 24
Culture MTB positive or Xpert positive* N (%)	30	5
Symptomatic N (%)	4 (13.3%)	0
Abnormal CXR N (%)	4/29 (13.8%)	1/4 (25%)

TB screen was done using symptoms, chest radiograph and sputum for liquid culture

* 28 are culture positive and 2 are Xpert positive

Churchyard, CROI 2020



Post COVID-19 TB Response plan

- ▶ Combined COVID-TB Testing
- ▶ Targeted Universal Testing
- ▶ Increased contact tracing
- ▶ Introduction of digital CXRs at facilities
- ▶ Roll-out of TB LAM testing at facilities
- ▶ CCMDD for TB and TPT

Acknowledgements

- G Churchyard
- V Chihota
- K Velen
- P Naidoo
- H Moultrie
- N Martinson
- H Haussler
- L Lebina



USAID
FROM THE AMERICAN PEOPLE

CHALLENGE > **TB**



Stop TB Partnership
GLOBAL DRUG FACILITY



TAG
Treatment Action Group

